

Streamlining Casino Security with Altronix Trove™

*How Cherokee Nation Entertainment
Upgraded Legacy Access Control System*





Securing a 24/7 Environment

Modernizing access control across 11 casinos—and keeping them fully operational through an access control transition—is no easy task. [Cherokee Nation Entertainment \(CNE\)](#), who owns and operates a racino, three resort hotels, golf course and one of the most recognizable gaming destinations in the Mid-South, upgrading access control meant more than just installing new hardware. It meant carefully navigating limited physical space, complex compliance requirements, and satisfying the nonstop demands of a 24/7 high-traffic casino environment. At the core of the deployment were high-security zones—including surveillance centers and other restricted operations areas—where access control is not just a convenience, but a regulatory and operational necessity. These environments demanded strict user permissions, layered access privileges, and infrastructure capable of delivering continuous uptime without fail.

The Challenge: Aging Infrastructure and Limited Space

Led by Project Manager, Jon Warden, Cherokee Nation Entertainment's in-house integration team faced mounting pressure to replace a legacy access system. The new solution needed to be compact, reliable, scalable, and compatible with the high-security environment of gaming operations. But finding the right fit was no simple matter. After much research and comparative analysis, the team selected DNA Fusion software and Mercury controllers for the access control platform.

For housing and powering the new infrastructure, they turned to Altronix's [Trove™ Series access and power integration solutions](#)—cost-effectively streamlining the rollout and setting the foundation for future growth.

“Space was one of our biggest challenges,” Warden explained. “We couldn’t just expand closets or rip out walls. With Altronix Trove, we could support more doors without reworking our entire infrastructure.”

In many locations, the Trove2 series compact footprint was the only option that would physically fit, making it the clear solution for retrofitting constrained environments. Its cost-efficiency was an added benefit, helping the team stay within budget while meeting performance and compliance standards.

A Strategic Access and Power Upgrade



Unlike traditional access control systems that required large footprints, custom builds, or extensive rewiring, [Altronix Trove2](#) access and power kits provide Cherokee Nation Entertainment with a compact, standardized solution. Each enclosure supported up to 16-doors within a small, manageable space—ideal for retrofitting existing casinos and facilities where space is at a premium.

The modular design of Trove2 allowed technicians to prebuild each unit in-house, streamlining the installation process across eleven high-security locations in Oklahoma and Mississippi.

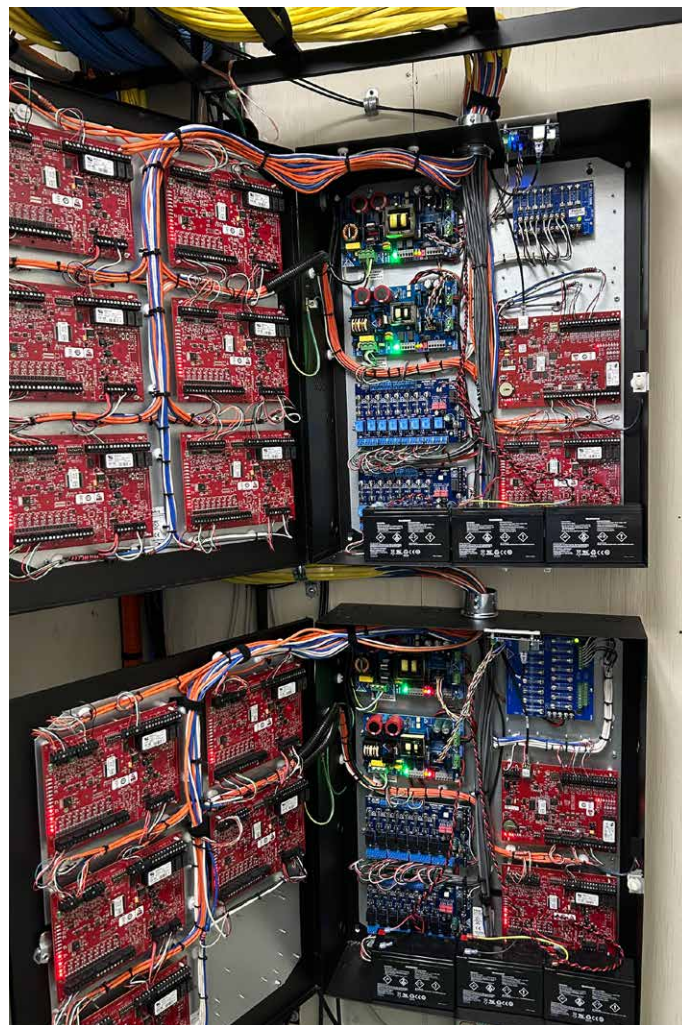
“We configured about 140 Trove enclosures ourselves,” said Warden. “It was almost like an assembly line. Trove gave us the flexibility to standardize without sacrificing the performance or security we needed.”

[Trove access and power integration](#) simplifies system design by easily combining Altronix power with access controllers from over 50 leading access brands. Available in scalable indoor/outdoor wall-mount, and rack-mount configurations, providing a single point for service and maintenance. Trove is also available in pre-wired or pre-configured kits that are ready for deployment, further reducing installation time and costs.

By leveraging all of the time, space and cost-saving advantages Trove offers, Cherokee Nation Entertainment deployed an access control solution that not only met current demands but also aligned with a long-term, scalable security strategy without compromising uptime or system performance. The upgrade delivered results that went far beyond technical specifications across every stage of the project.

- **Space Efficiency:** Supported 16 doors per enclosure without reconfiguring physical spaces.
- **Streamlined Deployment:** 140+ units built and deployed in-house across 11 properties.
- **Cost Savings:** Avoided major renovation or rewiring expenses.
- **Future Scalability:** Modular designs allow for easy system expansions.

While performance and integration were critical, Warden emphasized that Altronix's customer support team was equally essential to the project's success. Whether it was early-stage configuration questions or late-night diagnostics, Altronix's technical support team consistently delivered. That reliability, combined with the company's lifetime warranty, gave Cherokee Nation Entertainment long-term confidence in both the products and the partnership.



“Support has always been excellent when we needed it—but honestly, the Altronix products just work,” Warden said. “That kind of dependability matters when you’re securing 24/7 operations where there’s no margin for downtime.”

Network Power Management Ensures System Uptime

To ensure uninterrupted security operations, many of the deployed Trove enclosures were equipped with [Altronix's LINQ2™ network communication modules](#). These modules allowed Cherokee Nation Entertainment to move beyond reactive maintenance by delivering real-time power diagnostics and remote control of their systems. Integrated Altronix LINQ™ Technology provides complete visibility into system health—monitoring AC status, output current draw, DC voltage, battery condition, unit temperature, and more. If a surge occurs or a battery degrades, automated alerts are sent via email or dashboard notification allowing technicians to respond before downtime impacts critical operations.

Beyond status monitoring, LINQ enables remote or local control of power to execute a variety of automated security actions, including:



- Resetting access control devices/systems
- Diagnosing any issues without being on-site
- Making sure battery backup is reliable
- Managing responses based on security events

“LINQ network management makes a real difference,” said Warden. “We aren’t guessing or reacting if a failure occurs—we can see issues coming in and address them early.”

By combining Trove’s space-efficient design with LINQ’s intelligent diagnostics, Cherokee Nation Entertainment strengthened its access control reliability across every property—while laying the groundwork for smarter, more responsive security infrastructure.

Scalable Infrastructure for Future Access Control Expansion

With the success of this project, Cherokee Nation Entertainment modernized its access infrastructure, strengthened security across critical facilities, and positioned itself for future growth.

“Helping organizations like Cherokee Nation Entertainment modernize their infrastructure is exactly what drives us,” said Vincent Pancaldo, Marketing & Creative Director, Altronix Corporation. “With reliable products and responsive service, we make sure our partners can strengthen security without worrying about future challenges.”

Today, with Altronix Trove access and power integration solutions at the heart of its access control infrastructure, Cherokee Nation Entertainment stands ready to expand into new properties and adapt to evolving security demands.

**To learn how Altronix Trove enclosures
can help modernize and future-proof your facility,
visit altronix.com.**

A global leader in power and data transmission, Altronix designs and manufactures innovative solutions that maximize overall performance and efficiency. Our power products and peripherals feature the quality, reliability and unparalleled customer support that have been associated with Altronix for over 30 years.

Altronix products are backed by a Lifetime Warranty.



140 58th Street | Brooklyn, NY 11220
718.567.8181 – info@altronix.com – altronix.com